



# Hidden Waters

duplex condominiums



Ask us which units have basement exposure

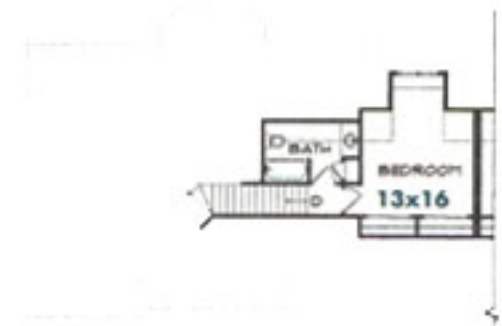
Price:  
from \$280,000.00



FIRST FLOOR

approx. 1900 sq. ft.

3 exterior elevation variations available



SECOND FLOOR



Enjoy the natural beauty this exclusive condominium development has to offer. Hidden Waters is a private, condominium, PUD located in the City of West Bend's southwest side just moments from Hwy. 45, shopping, banking and local services. See the sixteen, upscale, duplex homes sites, located at the end of a quiet cul du sac which backs up to woods, tree-lines and conservancy where local water fowl and wildlife thrive in the pond and wetlands.



# Hidden Waters

duplex condominiums

WEST BEND, WISCONSIN



## Moore Designs, Inc.

### Description

---

Enjoy the natural beauty this exclusive condominium development has to offer. Hidden Waters is a private, condominium, PUD located in the City of West Bend's southwest side just moments from Hwy. 45, shopping, banking and local services. See the sixteen, upscale, duplex homes sites, located at the end of a quiet cul du sac which backs up to woods, tree-lines and conservancy where local water fowl and wildlife thrive in the pond and wetlands.

### Condominium/PUD Description

---

Each duplex unit contains approximately 1900 square feet with a 2 car garage, large first floor master suite, den with volume ceiling, powder room, laundry/mudroom, gourmet kitchen with snack bar, large dining area and open concept, greatroom with cathedral ceiling and gas fireplace. Main living has 9' ceilings, wood floors, 6 panel pine doors and abundant glass. Upper level has private bedroom and bath. Many units have basement exposure/windows and the ability for additional expansion. All unit exteriors have 30 yr. asphalt dimensional shingles, cement siding and brick. Development is architecturally controlled and deed restricted.

### Improvements/Landscaping

---

Development is fully improved with access to city sewer and water as well as natural gas, electric, telephone and cable. Asphalt road and drives as well as landscaping are included in purchase price and are per landscape and site plans approved by the City of West Bend.

### Location

---

Hidden Waters is located in the City of West Bend at the end of Clarence Court. Hwy 45 to West Bend. Exit Paradise Drive. Go west to Clarence Court, then north one block to the cul du sac where you'll see the entrance to Hidden Waters.

### Schools

---

McLane Elementary • Badger Middle School • West Bend High Schools

### Construction Time Line

---

Varies from 3-6 months.

See back for floor plans and condo development map